





SAMUEL & SONS  
FALL 2024





# Elevating Interiors *with* Timeless Sophistication

At Samuel & Sons, our trimmings define and elevate the details that enrich interiors. In interior design, every detail matters, and trims play a crucial role in shaping a space's ambiance and character. Our trims, whether intricately hand-tied tassels, clean lines, or playful embroidered borders, act as defining embellishments that transform rooms into enchanting sanctuaries. They create focal points, redefine edges, emphasize colors, and accentuate furniture silhouettes. With versatile color choices and textile pairings, our borders and fringes seamlessly transition between traditional, transitional, and contemporary styles. It's about attention to detail, customization, and crafting a unique story to create something extraordinary.

This season, we debut distinct collections, inspiring endless possibilities to bring your vision to life. First, explore **Orange Hill Farm**, the first collaboration between renowned designer Mark D. Sikes and Samuel & Sons. Inspired by Sikes' idyllic country retreat in Ojai, California, this collection celebrates the timeless ambiance of country living and the vibrant beauty of citrus groves. It features classic cords, borders, and fringes embodying practical sophistication, suitable for various home styles and applications. Sikes' design ethos is rooted in traditionalism and classicism, with trim playing a pivotal role in every project. The **Orange Hill Farm** Collection includes three sub-collections—City, Coastal, and Country—centered around motifs Sikes is known for: the rosette, the stripe, and the check.

We are also delighted to introduce **Belvedere**, a sumptuous collection of six luxurious borders, skillfully crafted with velvet, intricate embroidery, and refined cording techniques. Drawing from classical architectural ornamentation, the Belvedere collection features contemporized interpretations of medallions, Grecian keys, botanicals, and arches. The plush velvet and meticulous embroidery highlight the graphic, dimensional nature of each pattern, offering a striking focal point for any interior.

Additionally, we are expanding our **Semi Custom** program to include performance yarns. This allows over 50 styles of cords, borders, fringes, and tassels to be customized for outdoor use. As a leader in performance trimming, we are proud to bring this innovation to the market for the first time.

With these new collections, Samuel & Sons builds upon our standard of elevating interiors with timeless sophistication. We invite you to explore our full range and discover the transformative power of trim for yourself.



# CONTENTS

**Orange Hill Farm**  
6-13

**5 Questions with:  
Maggie B. Dillon**  
14-17

**Belvedere**  
18-25

**Semi Custom**  
26-27

**From the Source:  
Our Team's Favorite Trims**  
28-29

**Délicat**  
30-31

**Acrobatics**  
32-33

**Westminster**  
34-35

**Technical Specs**  
36-39

# Orange Hill Farm Collection

Inspired by the design elements within classic stripes, checks, and rosettes, Orange Hill Farm is a collection of beautifully tailored cords, borders, and fringes.

SAMUEL & SONS  
MARK D. SIKES



MDS 8.25" Stripe  
Bullion Fringe in Iris  
FABRICS SCHUMACHER

## EXPLORING ORANGE HILL FARM: *A Fusion of Classic Elegance and Coastal Charm*

Embark on a journey into the captivating world of Orange Hill Farm, the latest collaboration between renowned designer Mark D. Sikes and Samuel & Sons. Inspired by Sikes' idyllic country retreat and citrus farm in Ojai, California, this collection of trimmings celebrates the timeless ambiance of country living and the vibrant beauty of citrus groves. It features classic cords, borders, and fringes that embody practical sophistication, suitable for a variety of home styles and applications, from formal spaces to everyday areas.

Sikes' design ethos is deeply rooted in traditionalism and classicism, with trim playing a pivotal role in every project he creates. The Orange Hill Farm Collection is divided into three sub-collections — City, Coastal, and Country — each centered around motifs that Sikes' firm is known for: the rosette, the stripe, and the check.

The MDS City vignette focuses on traditional rosettes inspired by classical architecture with Georgian influences at Orange Hill Farm. It is more formal, incorporating concentric circle motifs into fringes and embroidered borders in sophisticated colors. Notable patterns include the MDS Rosette Fringe, where miniature hand-embroidered rosettes are suspended from a dimensional striped header, and the MDS Rosette, a 1" diameter hand-embroidered accessory available in six subdued color combinations.

The MDS Coastal story draws inspiration from Orange Hill Farm's proximity to the Pacific Ocean. The collection features bold striped borders, bullion fringes, and piping in saturated colors, offering everyday style. These finely woven borders vary in width from ½"-4", providing a range of options in scale and complexity. Complementary twisted stripe cords, stripe piping, and two sizes of stripe bullion fringe are also included, with color combinations like Sapphire paired with Ivory and Poppy paired with Ivory.

The MDS Country collection captures the rustic charm of countryside living with check borders, piping, and graphic blocked color brush fringe. The MDS Check Border features a symmetrical tonal check on a warm ivory ground with frayed edges, also incorporated into the MDS Check Piping and MDS Check Gimp. Color combinations include Natural, Berry, Leaf, and Azure.

The Orange Hill Farm collection pays homage to the timeless appeal of country living, evoking the warmth and comfort of a cozy farmhouse through its beautifully crafted trimmings.



PORTRAIT BY: STEPHEN KARLISCH

**MARK D. SIKES** is an esteemed interior designer and tastemaker working on projects throughout the United States and abroad, including the White House and Blair House. He is known for all-American sensibilities and a fresh take on classical aesthetics. Mark has a talent for creating beautiful and timeless interiors that embody an indoor/outdoor lifestyle. His work has been featured in numerous design magazines and he is a member of the AD100 and Elle Décor A-List. Successful licensed collections include Schumacher, Chaddock, Hudson Valley Lighting, and Modern Matter. Mark's first book, *Beautiful*, was a New York Times best seller and was followed up by *More Beautiful*, which debuted in 2020. His latest book is called *Forever Beautiful*.

Mark seeks to create beautiful interiors and, above all, a more beautiful world. Beauty is everywhere. It surrounds us each and every day; all we have to do is look.



From left to right: MDS Stripe Piping, MDS 2" Stripe Border, MDS Stripe Cord with Tape, MDS 1" Stripe Border and MDS Stripe Gimp in Iris

*MDS Check Border and  
MDS Check Piping in Leaf*



*MDS Check Brush Fringe in Leaf*

From left to right: MDS Embroidered Rosette Border in Natural, MDS Rosette in Ivory and MDS Rosette Cord with Tape in Natural



MDS Rosette Gimp in Ivory  
From top to bottom: MDS Rosette Cord with Tape and MDS Embroidered Rosette Border in White, MDS Rosette Gimp in Ivory, MDS Embroidered Lattice Border in Natural and MDS Rosette Fringe in Ivory





## 5 Questions with: Maggie Dillon

Known for her ability to mix high & low (and for her unflinching use of color!), Maggie Dillon, a North Carolina-based designer who was recently named to House Beautiful's Next Wave list, sees design as joyful personal expression. We were lucky enough to sit down with Maggie to find out what inspires her optimistic approach to design and learn how she trims with style.



*Dillon used the Aurelia Gimp in Apple Green to define the romantic, scalloped curves of the draperies' leading edge.*

**SAMUEL & SONS: What value does introducing trim add to your projects?**

MAGGIE DILLON: Adding trim provides a pop of color and contrast to which the eye is immediately drawn. It's a layer that's certainly not necessary but always appreciated and noticed, and gives a further custom feel in any application.

**S&S: You use trim in a fresh way, what is your design philosophy?**

MD: As obvious as it sounds, listening to your gut is the best thing to do. Whether this is pertaining to a client, a design direction or decision, or another challenge you've come across, your gut is almost always going to tell you the right next step. Do what feels right and good to you and the rest will fall into place.



**S&S: How did you get started in design?**

MD: My first job out of college was with Circa Interiors & Antiques as a personal assistant to one of the owners/designers there. It was great exposure to the industry and helped me realize my desire to learn more about design, which prompted me to go back to school at the Art Institute in Charlotte. At that point, I also started working with Charlotte Lucas who helped me uncover my love for color and pattern.

**S&S: What informs your aesthetic, where do you find inspiration?**

MD: Finding inspiration knows no bounds! Travel, design books, social media to name a few.

**S&S: What advice do you have for young designer looking to elevate their project or who may be scared of using trim?**

MD: Try it out on a low-risk piece of furniture or decorative item like a foot stool or pair of pillows. You'll be surprised at how much impact a small piece of trim can have and will without a doubt become hooked. There are a million ways to use and apply trim and it's really fun discovering new possibilities.



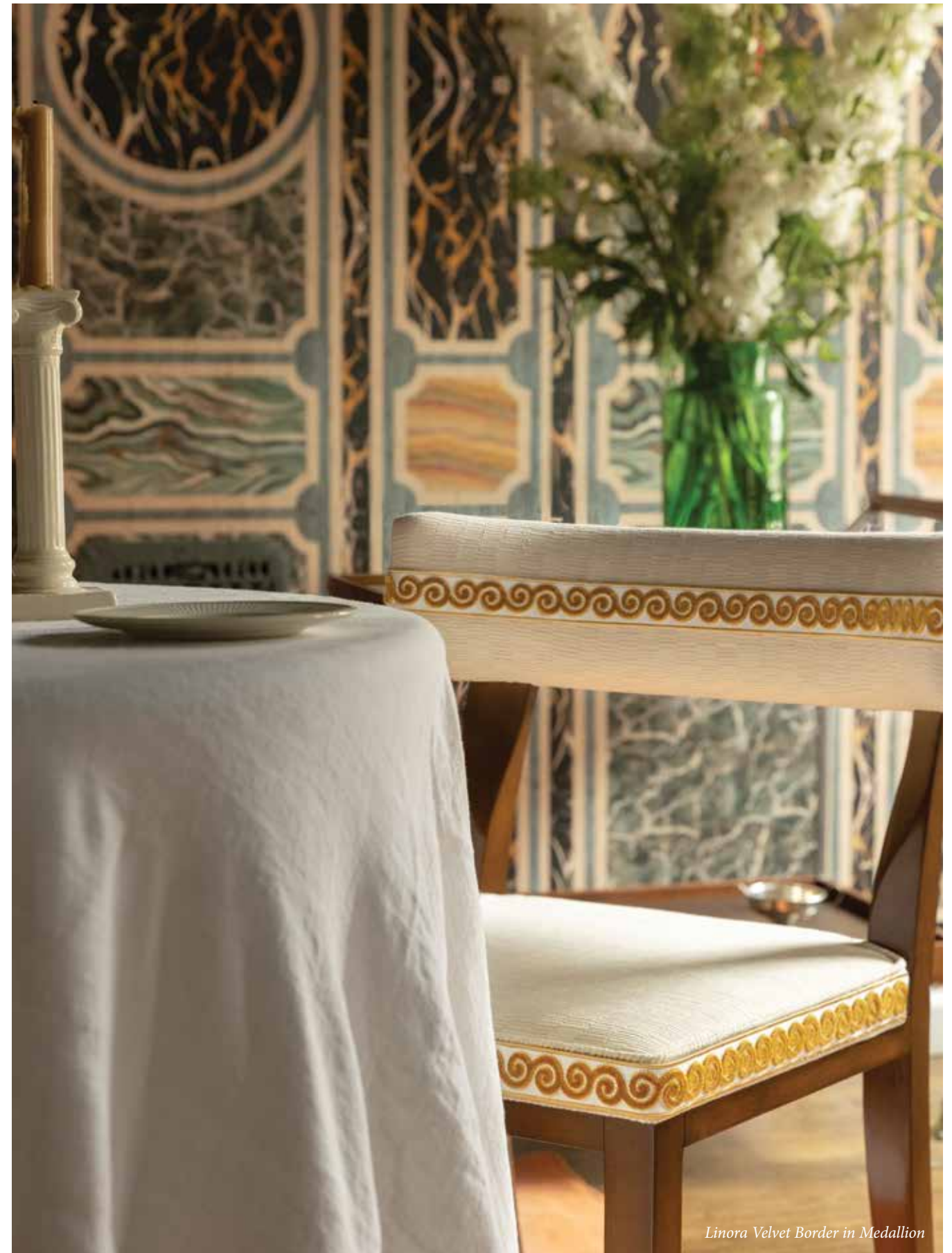
*The Swiss Velvet Piping is Dillon's go-to trim, from upholstery to pillows and beyond. This chair (left) is finished with the piping in shade Plum.*



*The Bali Cotton Bullion Fringe trims the table skirt while the Julienne Double Welt plays in harmony with the chair's upholstery fabric.*

# Belvedere Collection

A beautiful collection of luxurious velvet borders in which contemporary patterns are created with intricate embroidery and cord appliqué.

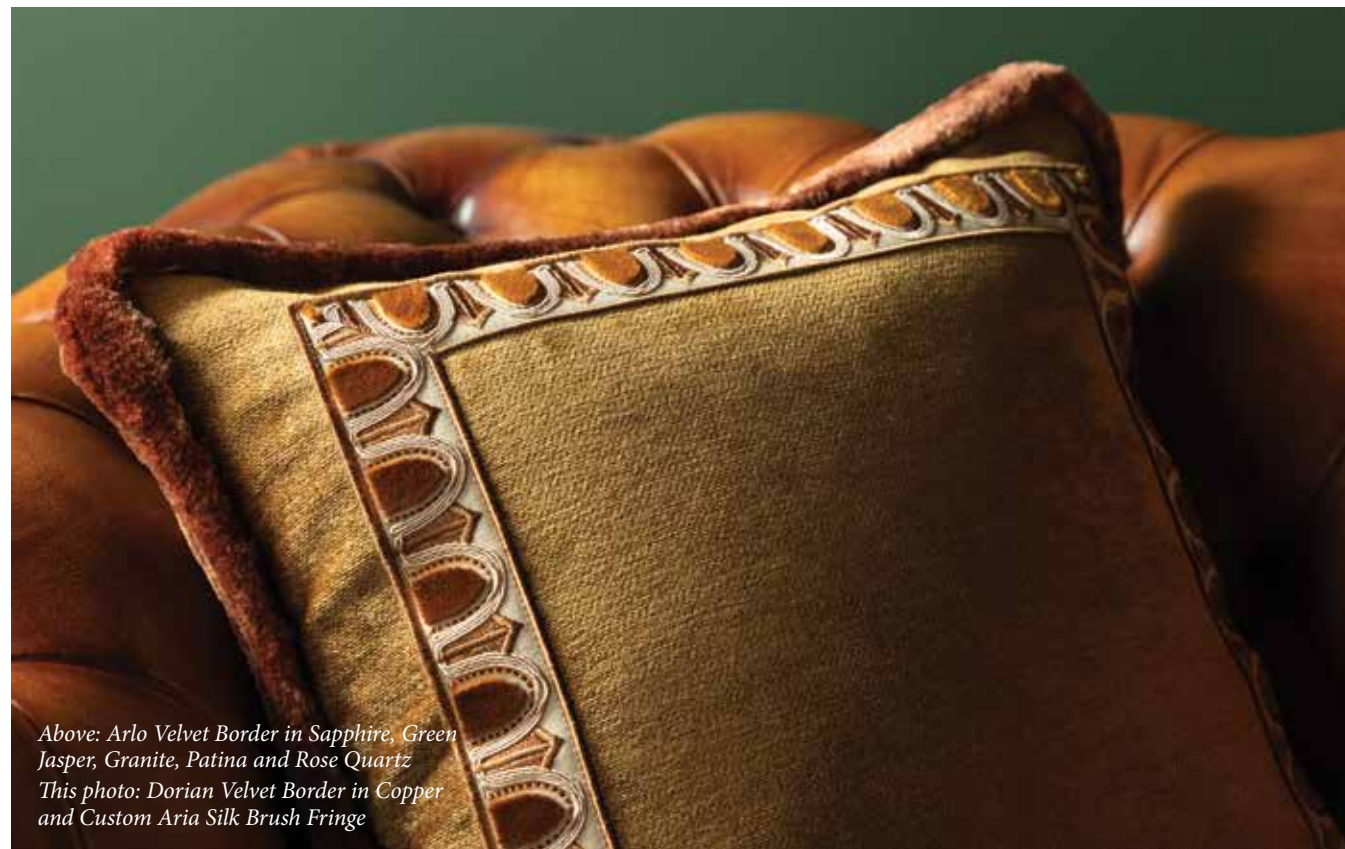


*Linora Velvet Border in Medallion*

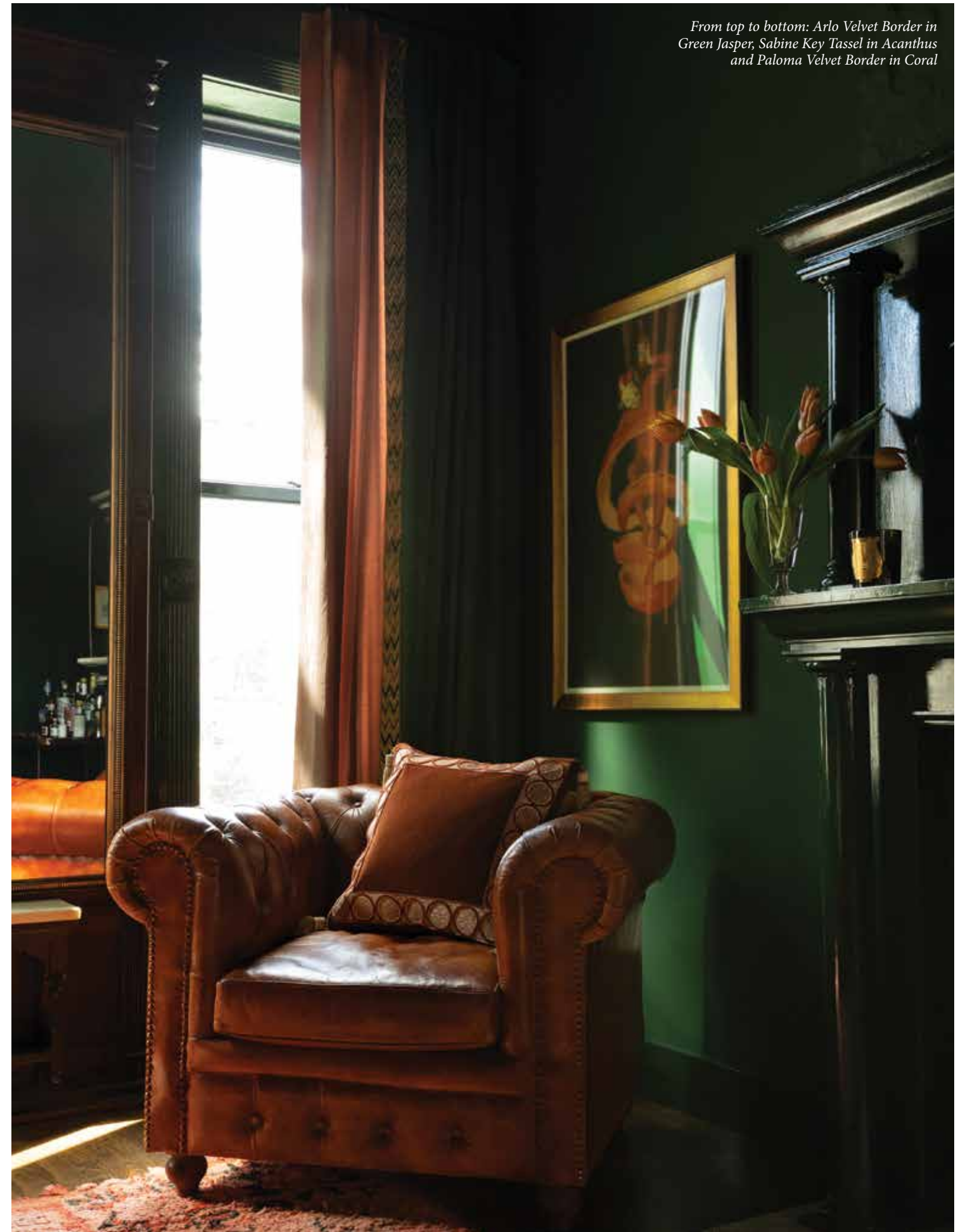


*“Belvedere is a contemporary collection of sumptuous velvet, embroidered, and cord appliqué borders rooted in the design language of classic architectural ornamentation.”*

Marisa Gutmacher  
VP of Design



*Above: Arlo Velvet Border in Sapphire, Green Jasper, Granite, Patina and Rose Quartz  
This photo: Dorian Velvet Border in Copper and Custom Aria Silk Brush Fringe*



*From top to bottom: Arlo Velvet Border in Green Jasper, Sabine Key Tassel in Acanthus and Paloma Velvet Border in Coral*



*From left to right: Délicat Silk Border in Pewter, Lennox Velvet Border in Lapis and Bloom Key Tassel in Hydrangea*

*“The juxtaposition of the dense velvet and intricate embroidery stitching creates a graphic, dimensional rendering of each pattern.”*

Marisa Gutmacher  
VP of Design



*Arlo Velvet Border in Sapphire*



*From top to bottom: Paloma Velvet Border in Imperial, Linora Velvet Border in Sea Blue, Isadora Velvet Border in Sterling Blue and Dorian Velvet Border in Azure*



From left to right: Paloma Velvet Border in Willow, Isadora Velvet Border in Sterling Blue and Dorian Velvet Border in Snow



1.



2.



3.

1. Paloma Velvet Border in Willow  
2. Bagatelle Marabout Fringe in Gardenia and Lennox Velvet Border in Ivory  
3. Dorian Velvet Border in Snow



# Your own trim made easy, in 6 weeks or less

We are pleased to announce the launch of Semi Custom performance yarns and the introduction of our new Semi Custom fan deck. The Semi Custom fan deck allows you to select your yarns and colors, including new PERFORMANCE options, all in one place. Whether you need the perfect match to a colorful fabric or want to bring a custom layer of detail to a poolside project, creating your own trim has never been easier.

## ABOUT SEMI CUSTOM

Semi Custom allows you to seamlessly customize over 50 styles to your fiber and color specifications. Choose from four fibers, including PERFORMANCE yarns, and a nearly unlimited selection of colors to create your custom trim, all with the click of a button.



DISCOVER THE POWER  
OF SEMI CUSTOM

SEMI | custom 



# From the Source:

## Our team's favorite trims.

We put a call out to our Samuel & Sons colleagues from across the globe, asking them to do the impossible: pick their favorite trim from over 10,000 items in our collections. We heard from our showrooms in Paris, Dallas, and everywhere in between, each with their own regional flare. From dramatic fringe to delicate cords, their answers might surprise you...



**KRISTIN BENAGES**  
Midwest Sales Manager | US  
"My favorite trim is the Uxmal Appliqué Border from the Artesania X Collection by Laura Kirar. The saturation of colors and artisanal, yet sophisticated, aesthetic really speak to me."



**KARA STIFFLER**  
Regional Manager, Dallas | US  
"The Xelha Border in Avocado from the Inca Collection is my favorite Samuel & Sons trim. The colors, movement, and texture in this border captivate my love for the global aesthetic."



**KATE NESS**  
International Sales Director | UK  
"Whilst I have a fondness for all of our collections, the 1/8" Cambridge Cord has my heart. Like a full stop at the end of a sentence, this tiny, unassuming trim punctuates any application with sophisticated and purposeful detail."



**CARINE LEBEDEL**  
Showroom and Customer Service Manager | France  
"I like the Délicat collection for its very well-named delicate and simply flawless trimmings. They represent the very essence of trim to me, adding discrete and refined details to fabrics for a perfect finish. The latest colour additions make it a classical, yet modern, essential range..."



**MOUNICA BOJJA**  
UK & EU Custom Manager | UK  
"I love the Barcelona Fringe as a base for layering. A favourite combination I did for a client recently was the Barcelona Fringe in Emerald, layered with the Oberon Triple Beaded Fringe, and the Artemis Glass Beaded Border. This trio composed all of me in one: a bit quirky, a little trad, with a whole lot of bling! You can never have too many layers..."



**SASHA GALLACE**  
VP, US Sales | US

"It's so hard to pick just one trim from the vast array of our collections, but the Bagatelle Velvet Border and Tassel Skirt Fringe by Timothy Corrigan truly make my mouth water. I love this collection because it is rich in detail and can elevate simple upholstery into exquisite works of art."







*Délicat Silk Brush Fringe in  
Lilac, Honeydew and Ice Blue*

## Délicat Collection

A petite collection of delicate silk cords, borders, and fringes in a beautiful array of hues.



*From left to right: Délicat Silk Cut  
Fringe and Silk Fan Edge in Coral  
and Délicat Silk Border in Navy*



# ACROBATICS

Lori Weitzner introduces her fifteenth collection for Samuel & Sons with a stylishly sophisticated collection of holdbacks, defining a new way to adorn drapery.

LORI WEITZNER  
for SAMUEL & SONS





*Poodle Bouclé Border in Cream,  
 Scottie Embroidered Border in Grey,  
 Goldador Bouclé Border in Indigo  
 and Coton de Tulear Border in Cream*

# Westminster Collection

Introducing Westminster, a novel collection of embroidered linen borders inspired by our affinity for dogs.



*Poodle Bouclé Border in Brown  
 FABRIC PIERRE FREY*

## Orange Hill Farm Collection



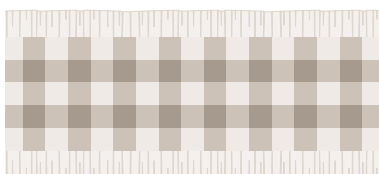
**CT-61119 1/4" (6 mm)**  
**MDS Check Piping /**  
Passepoil carreaux MDS  
60% CO, 40% PES  
Colours : Azure, Berry, Leaf, Natural



**GB-61120 11/16" (18 mm)**  
**MDS Check Gimp /**  
Lézarde carreaux MDS  
100% CO  
Colours : Azure, Berry, Leaf, Natural



**BR-61121 1.4" (35 mm)**  
**MDS Check Brush Fringe /**  
Marabout effilé carreaux MDS  
99% CO, 1% PES  
Colours : Azure, Berry, Leaf, Natural



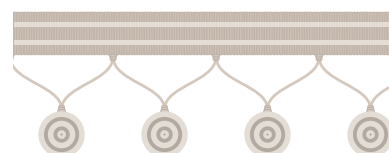
**BT-61122 2.5" (63 mm)**  
**MDS Check Border /**  
Galon carreaux MDS  
Repeat / Raccord : 5/8" (16 mm)  
100% CO  
Colours : Azure, Berry, Leaf, Natural



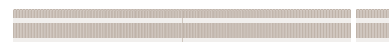
**CT-61113 5/32" (4 mm)**  
**MDS Rosette Cord with Tape /**  
Câblé sur pied MDS Rosette  
68% CO, 30% PES, 2% NY  
Colours : Chocolate, Coral,  
Goldenrod, Ivory, Mint, Natural,  
Sky, Wedgewood, White, Willow



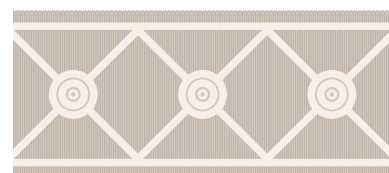
**BT-61115 2" (51 mm)**  
**MDS Embroidered Rosette Border /**  
Galon brodé MDS Rosette  
Repeat / Raccord : 2.5" (63 mm)  
50% Mercerized CO, 50% PES  
Colours : Chocolate, Coral, Goldenrod,  
Ivory, Mint, Natural, Sky, Wedgewood,  
White, Willow



**TF-61116 2.25" (57 mm)**  
**MDS Rosette Fringe /**  
Frangé MDS Rosette  
Repeat / Raccord : 1.5" (38 mm)  
70% Mercerized CO, 30% PES  
Colours : Goldenrod, Ivory, Sky, Willow



**GB-61114 5/8" (16 mm)**  
**MDS Rosette Gimp /**  
Lézarde MDS Rosette  
80% Mercerized CO, 20% PES  
Colours : Chocolate, Coral,  
Goldenrod, Ivory, Mint, Natural,  
Sky, Wedgewood, White, Willow



**BT-61117 2.45" (62 mm)**  
**MDS Embroidered Lattice Border /**  
Galon brodé lattice MDS  
Repeat / Raccord : 2" (51 mm)  
50% Mercerized CO, 50% PES  
Colours : Chocolate, Coral, Goldenrod,  
Ivory, Mint, Natural, Sky, Wedgewood,  
White, Willow



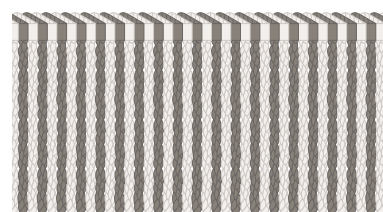
**RT-61118 1" (27 mm)**  
**MDS Rosette /**  
Cartisane MDS  
73% WD, 27% Mercerized CO  
Colours : Goldenrod, Ivory, Mint,  
Natural, Sky, White, Willow



**CT-61105 3/16" (5 mm)**  
**MDS Stripe Cord with Tape /**  
Câblé sur pied rayé MDS  
82% Mercerized CO, 17% PES, 1% NY  
Colours : Chocolate, Evergreen,  
Fern, Iris, Jonquil, Navy, Poppy,  
Red, Sapphire, Wheat



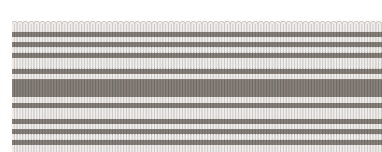
**BT-61108 1" (26 mm)**  
**MDS 1" Stripe Border /**  
Galon rayé 26 mm MDS  
100% Mercerized CO  
Colours : Chocolate, Evergreen,  
Fern, Iris, Jonquil, Navy, Poppy,  
Red, Sapphire, Wheat



**BU-61110 3" (76 mm)**  
**MDS 3" Stripe Bullion Fringe /**  
Frangé moulignée rayée 76 mm MDS  
100% Mercerized CO  
Colours : Fern, Iris, Sapphire, Wheat



**CT-61106 1/4" (6 mm)**  
**MDS Stripe Piping /**  
Passepoil rayé MDS  
99.7% Mercerized CO, 0.3% PES  
Colours : Chocolate, Evergreen,  
Fern, Iris, Jonquil, Navy, Poppy,  
Red, Sapphire, Wheat



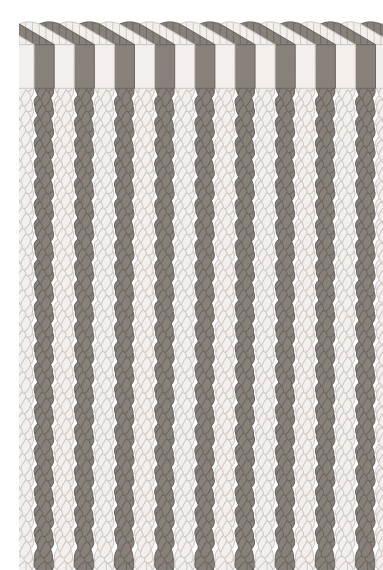
**BT-61109 2" (51 mm)**  
**MDS 2" Stripe Border /**  
Galon rayé 51 mm MDS  
100% Mercerized CO  
Colours : Chocolate, Evergreen,  
Fern, Iris, Jonquil, Navy, Poppy,  
Red, Sapphire, Wheat



**BT-61112 4" (10.1 cm)**  
**MDS 4" Stripe Border /**  
Galon rayé 10.1 cm MDS  
98% Mercerized CO, 2% PES  
Colours : Fern, Iris, Sapphire, Wheat



**GB-61107 1/2" (13 mm)**  
**MDS Stripe Gimp /**  
Lézarde rayée MDS  
100% Mercerized CO  
Colours : Chocolate, Evergreen,  
Fern, Iris, Jonquil, Navy, Poppy,  
Red, Sapphire, Wheat



**BU-61111 8.25" (21 cm)**  
**MDS 8.25" Stripe Bullion Fringe /**  
Frangé moulignée rayée 21 cm MDS  
100% Mercerized CO  
Colours : Fern, Iris, Sapphire, Wheat

## Belvedere Collection



**BT-61070 1.65" (42 mm)**  
**Dorian Velvet Border /**  
Galon velours Dorian  
Repeat / Raccord : 1.5" (38 mm)  
52% VI, 18% PES, 15% CO, 15% LI  
Colours : Azure, Copper, Evergreen,  
Linen, Mineral, Snow



**BT-61072 1.75" (44 mm)**  
**Lennox Velvet Border /**  
Galon velours Lennox  
Repeat / Raccord : 5.25" (13.3 cm)  
40% PES, 26% VI, 19% LI, 15% CO  
Colours : Emerald, Garnet, Ivory, Lapis,  
Oro, Oyster, Verdigris



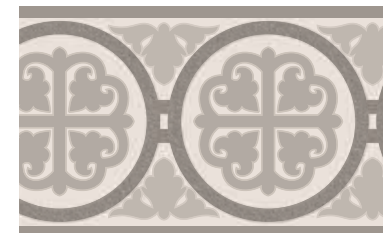
**BT-61071 2.65" (67 mm)**  
**Isadora Velvet Border /**  
Galon velours Isadora  
Repeat / Raccord : 2" (51 mm)  
48% CO, 42% VI, 10% PES  
Colours : Oyster, Pearl, Sterling Blue



**BT-61073 1.3" (33 mm)**  
**Linora Velvet Border /**  
Galon velours Linora  
Repeat / Raccord : 2" (51 mm)  
44% VI, 29% PES, 27% CO  
Colours : Juniper, Marble, Medallion, Sea Blue



**BT-61069 2.5" (64 mm)**  
**Arlo Velvet Border /**  
Galon velours Arlo  
Repeat / Raccord : 5" (12.7 cm)  
55% CO, 25% VI, 20% PES  
Colours : Granite, Green Jasper, Patina,  
Rose Quartz, Sapphire



**BT-61074 2.8" (71 mm)**  
**Paloma Velvet Border /**  
Galon velours Paloma  
Repeat / Raccord : 2.5" (64 mm)  
41% VI, 22% PES, 20% LI, 17% CO  
Colours : Blush, Coral, Imperial, Jonquil,  
Snow, Willow

## Orange Hill Farm Collection



## Belvedere Collection

## Délicat Collection



**982-37194 1/2" (13 mm)**  
**Délicat Silk Gimp /**  
*Lézarde soie*  
 100% SE  
*Colours : Basil, Blush, Coral, Cream, French Blue, Gold, Honeydew, Ice Blue, Lilac, Navy, Onyx, Pewter, Platinum, Poppy, Seafoam, Walnut, White*



**986-36985 1/2" (13 mm)**  
**Délicat Silk Fan Edge /**  
*Giselle soie*  
 Repeat / Raccord: 1.25" (32 mm)  
 100% SE  
*Colours : Basil, Blush, Coral, Cream, French Blue, Gold, Honeydew, Ice Blue, Lilac, Navy, Onyx, Pewter, Platinum, Poppy, Seafoam, Walnut, White*



**983-37195 1" (25 mm)**  
**Délicat Silk Moss Fringe /**  
*Frange mousse soie*  
 100% SE  
*Colours : Basil, Blush, Coral, Cream, French Blue, Gold, Honeydew, Ice Blue, Lilac, Navy, Onyx, Pewter, Platinum, Poppy, Seafoam, Walnut, White*



**981-39317 1/4" (5 mm)**  
**Délicat Silk Cord with Tape /**  
*Câblé sur pied soie*  
 42% PES, 42% SE, 16% CO  
*Colours : Basil, Blush, Coral, Cream, French Blue, Gold, Honeydew, Ice Blue, Lilac, Navy, Onyx, Pewter, Platinum, Poppy, Seafoam, Walnut, White*



**BT-60859 1" (25 mm)**  
**Délicat Silk Border /**  
*Galon soie*  
 67% SE, 33% Spun VI  
*Colours : Basil, Blush, Coral, Cream, French Blue, Gold, Honeydew, Ice Blue, Lilac, Navy, Onyx, Pewter, Platinum, Poppy, Seafoam, Walnut, White*



**985-37196 1.5" (38 mm)**  
**Délicat Silk Tassel Fringe /**  
*Frange mèches soie*  
 Repeat / Raccord: 5/8" (16 mm)  
 92% SE, 8% PES  
*Colours : Basil, Blush, Coral, Cream, French Blue, Gold, Honeydew, Ice Blue, Lilac, Navy, Onyx, Pewter, Platinum, Poppy, Seafoam, Walnut, White*

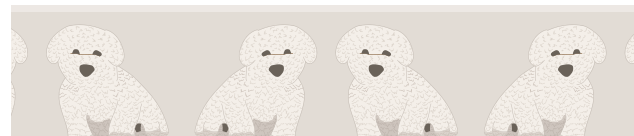


**986-37475 2" (51 mm)**  
**Délicat Silk Cut Fringe /**  
*Éffilé soie*  
 Repeat / Raccord : 1.75" (44 mm)  
 100% SE  
*Colours : Basil, Blush, Coral, Cream, French Blue, Gold, Honeydew, Ice Blue, Lilac, Navy, Onyx, Pewter, Platinum, Poppy, Seafoam, Walnut, White*

## Westminster Collection



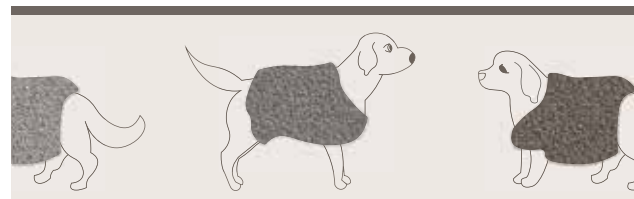
**BT-61044 2.50 (63 mm)**  
**Scottie Embroidered Border /**  
*Galon brodé Scottie*  
 Repeat / Raccord : 5.7" (14.5 cm)  
 80% LI, 20% SPUN PES  
*Colours : Black, Grey*



**BT-61041 2.75" (70 mm)**  
**Coton de Tulear Border /**  
*Galon Coton de Tulear*  
 Repeat / Raccord : 5.15" (13 cm)  
 90% LI, 10% SPUN PES  
*Colours : Cream, Wedgewood*



**BT-61043 3.65 (92 mm)**  
**Poodle Bouclé Border /**  
*Galon bouclé Poodle*  
 Repeat / Raccord : 7.65" (19.3 cm)  
 80% LI, 15% PC, 5% VI  
*Colours : Brown, Cream*



**BT-61042 3.95" (10 cm)**  
**Goldador Bouclé Border /**  
*Galon bouclé Goldador*  
 Repeat / Raccord : 15.75" (40 cm)  
 80% LI, 18% PC, 2% VI  
*Colours : Indigo*

## Acrobatics Collection



**HB-61059**  
**Cartwheel Holdback /**  
*Embrasse câblé Cartwheel*  
 Spread / Longueur : 39" (99 cm)  
 100% Microfiber LH  
*Colours : Chocolate, Putty, Slate, Snow*



**HB-61061**  
**Tightrope Holdback /**  
*Embrasse câblé Tightrope*  
 Spread / Longueur : 38" (96.5 cm)  
 50% PC Foam, 50% Spun PES  
*Colours : Antique Lace, Burlap, Lagoon, Mist, White*



**HB-61057**  
**Aerial Holdback /**  
*Embrasse câblé Aerial*  
 Spread / Longueur : 39" (99 cm)  
 80% Artificial LH, 7% PES, 7% RY, 6% LI  
*Colours : Sandbar*



**HB-61060**  
**Somersault Holdback /**  
*Embrasse câblé Somersault*  
 Spread / Longueur : 39" (99 cm)  
 46% LI, 41% CO, 10% NY, 2% RY, 1% PES  
*Colours : Charcoal, Cream, Taupe*



**HB-61058**  
**Backflip Holdback /**  
*Embrasse câblé Backflip*  
 Spread / Longueur : 39" (99 cm)  
 54% LH, 36% WD, 5% RY, 4% CO, 1% PES  
*Colours : Ebony, Ivory*

LORI WEITZNER  
 for SAMUEL & SONS



US: 212.704.8000  
UK/EU: +44 (0) 20.7351.5153  
FR: +33 (0)1 42.33.22.90  
SAMUELANDSONS.COM

Home tweet  
home

SAMUEL & SONS IS TRIM.  
samuelandsons.com

